

# WHAT YOU NEED TO KNOW ABOUT THE

# DIGITAL SAT

The SAT is now only digitally formatted. Read more to learn about the structure, format, and content of the new exam.

## OVERALL STRUCTURE

2 HOURS 14 MINS



98 QUESTIONS

### READING & WRITING MODULE 1

27 Questions  
32 Min.

### READING & WRITING MODULE 2

27 Questions  
32 Min.

10 MIN

BREAK

### MATH MODULE 1

22 Questions  
35 Min.

### MATH MODULE 2

22 Questions  
35 Min.

64 MIN

70 MIN

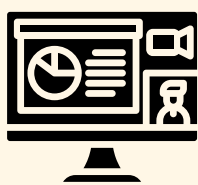


71s PER QUESTION



95s PER QUESTION

## READING & WRITING SECTION



### CONTENT BREAKDOWN

Craft and Structure | 28%  
Information and Ideas | 26%  
Standard English Conventions | 26%  
Expression of Ideas | 20%

### ORGANIZATION

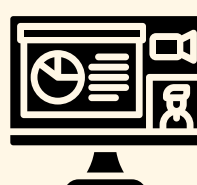
Questions within each module are grouped by question type.

### PASSAGES



- Each passage will be between 25-150 words
- Each question will refer to its own short passage or pair of passages

## MATH SECTION



### CONTENT BREAKDOWN

Algebra | 35%  
Advanced Math | 35%  
Problem Solving & Data Analysis | 15%  
Geometry & Trigonometry | 15%

### ORGANIZATION

Questions within each module are arranged in order of increasing difficulty.

### CALCULATORS



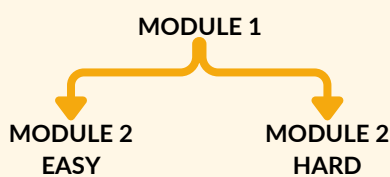
- Calculators can be used on the entire section.
- Students may bring an approved calculator or use the integrated Desmos graphing calculator

## FORMAT



Test is administered on the computer.

## SECTIONS



The modules are section adaptive. Difficulty of Module 2 depends on performance on Module 1.

## QUESTIONS



**MULTIPLE CHOICE**  
4 Answer Choices



**STUDENT-PRODUCED RESPONSE**  
Math Section Only

## SCORING



READING AND WRITING

200-800



MATH

200-800



TOTAL SCORE

400-1600



NEED EXTRA TUTORING & PREP? FEEL FREE TO CONTACT US!

[www.apacademy.net](http://www.apacademy.net)

[info@apacademy.net](mailto:info@apacademy.net)

424-999-5169

AP Academy

AP Academy

@irvine\_ap\_academy